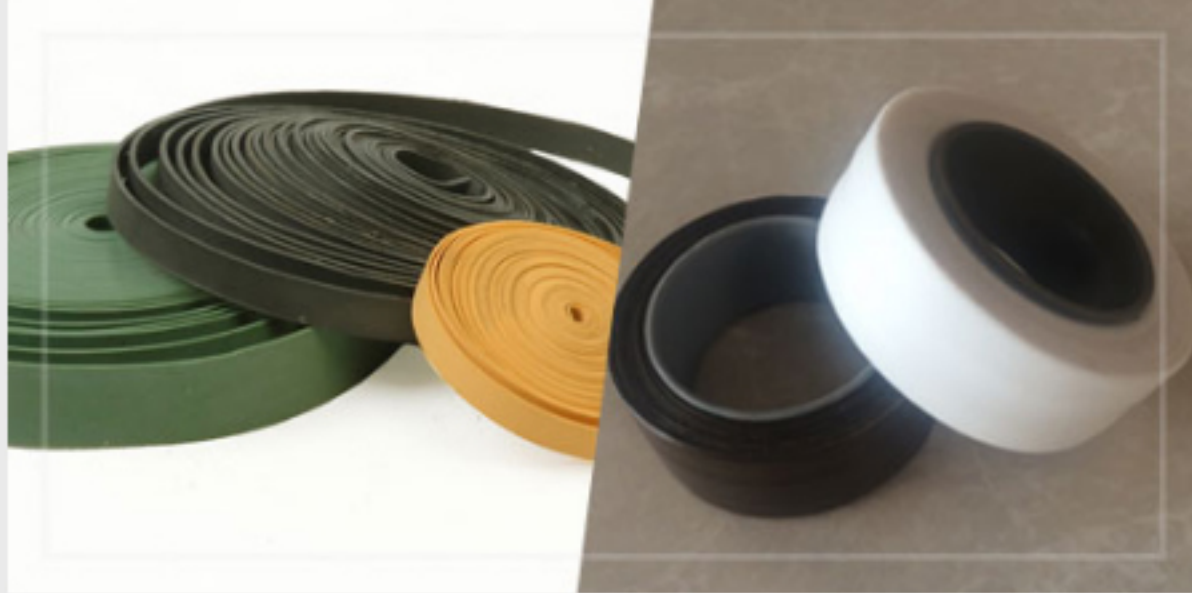




## Heavy Electrical Insulation



### PTFE Skived Insulation Tapes

- Heavy insulation of up to 150Kv/mm
- Chemically etched to allow for bonding
- Suitable for cable wrapping and anti-static applications



### ePTFE Tapes for Cable Wrapping

- Ideal for coaxial cable wrapping
- Density and composition can be customised to suit application



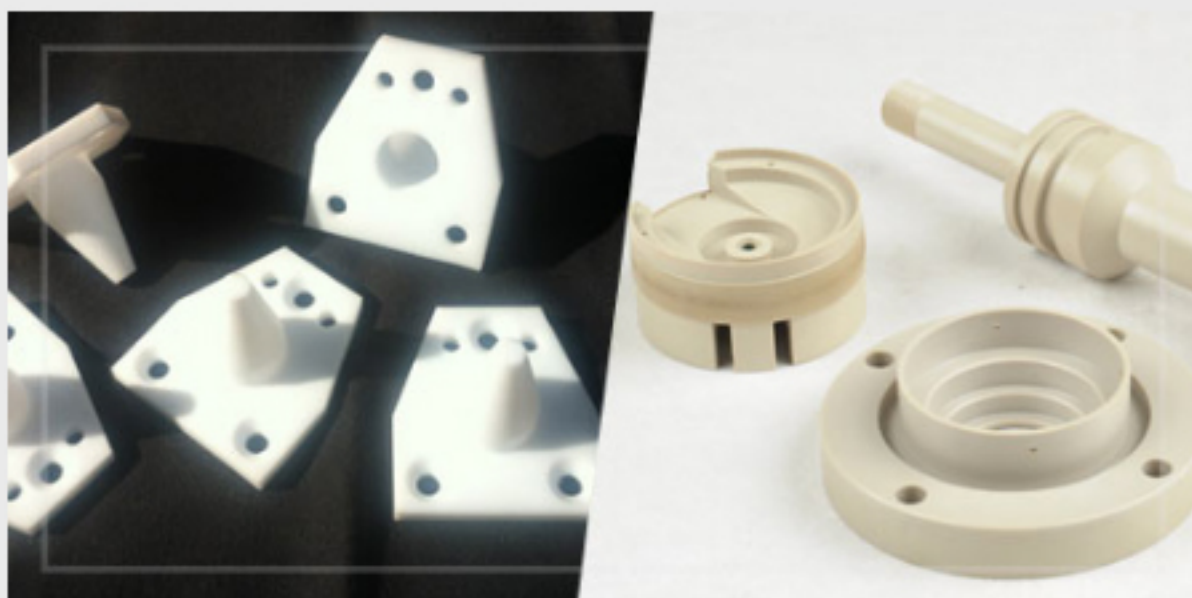
### PTFE/Teflon Tubing

- Thin and thick walled tubes with high dielectric strength
- Ideal for sheathing high voltage cables
- Anti-static and ESD grades available



### Specialised Tubing Products

- Sheaths for pantographs
- Welded tubing assemblies
- Can be heat shaped to match application requirement



### Heavy Insulation Components

- Components with high electrical resistance
- Transducer covers
- Radomes for radar applications
- Anti-static and ESD grades available